

Client



Source

**Bergamot, Mint** (*Mentha citrata*)

EVS-2026-NG-10

Sample

Bergamot, Mint (*Mentha citrata*)

Batch #: US-59534
 Type: Essential Oil
 Origin: United States
 CAS #: 68917-15-7

Client

**NATURE'S
GIFT**

Properties

RI: NT
 SG: NT

Primary

37.32% | Linalool
35.05% | Linalyl acetate
3.54% | beta-Caryophyllene
2.68% | alpha-Terpineol

Result

**Pass**

Meets specifications

ANALYSIS SUMMARY

Total Compounds: 72

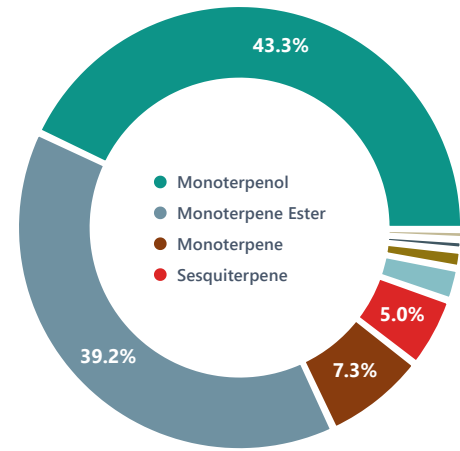
Lab

**Essential Validation Services**

EO Testing Lab

240 Goose Hollow Road
 Berthoud, Colorado 80513

Phone: (317) 361-5044

essentialvalidationservices.com
CHEMICAL FAMILY BREAKDOWN**TOTAL CONTENT IDENTIFIED**

99.8% identified

0.2% unidentified

Conclusion

PROFESSIONAL ANALYSIS SUMMARY

The chromatographic analysis of this Essential Oil sample accounted for 99.8% of the total sample composition. No adulterants, diluents, or contaminants were detected via this method. This oil is a unique chemistry that more closely matches a Lavender, but with mint properties. We do believe that it is a genuine Bergamot, Mint (*Mentha citrata*), but an unusual one.

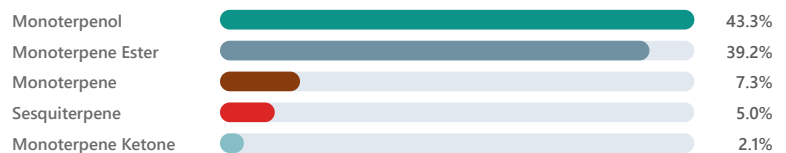
Adam Christensen • Apr 5, 2026

Adam Christensen

Analyst Signature

Date

Mar 19, 2026

CHEMICAL FAMILY DISTRIBUTION

Client



Source

**Bergamot, Mint** (*Mentha citrata*)

EVS-2026-NG-10

Professional Analysis Summary

1 Sample Analysis

This Bergamot, Mint (*Mentha citrata*) sample shows 72 detected compounds (72 identified, 100.0% rate).

2 Major Components

Predominant: Linalool (37.3%), Linalyl acetate (35.0%), beta-Caryophyllene (3.5%), +8 others.

3 Chemical Profile

14 chemical families: Monoterpenol, Monoterpene Ester, Sesquiterpene, +11 others.

4 Quality Assessment

Analysis complete for Bergamot, Mint (*Mentha citrata*). No literature standard comparison available - assessment based on analytical data only.

Client



Source

**Bergamot, Mint** (*Mentha citrata*)

EVS-2026-NG-10

Total Percentage:

99.79%

Number	RT	Area %	Compound Name	Chemical Family
1	9.44	0.02%	2,5-Diethyltetrahydrofuran	Furan
2	10.36	0.03%	alpha-Thujene	Monoterpene
3	10.65	0.14%	alpha-Pinene	Monoterpene
4	11.15	0.01%	Camphene	Monoterpene
5	11.68	0.07%	1-Octen-3-ol	Aliphatic Alcohol
6	11.81	0.21%	Sabinene	Monoterpene
7	12.02	1.55%	beta-Pinene	Monoterpene
8	12.15	1.44%	Myrcene	Monoterpene
9	12.22	0.01%	3-Octanol	Aliphatic Alcohol
10	12.30	0.02%	trans-Dehydroxy linalool oxide	Monoterpene Ether
11	12.81	0.03%	cis-Dehydroxylinalool oxide	Monoterpenol
12	13.23	0.03%	alpha-Terpinene	Monoterpene
13	13.31	0.03%	Hexyl acetate	Aliphatic Ester
14	13.49	0.27%	para-Cymene	Monoterpene
15	13.67	1.15%	Limonene	Monoterpene
16	13.74	0.81%	(Z)-beta-Ocimene	Monoterpene
17	13.83	0.43%	1,8-Cineole	Monoterpene Ether
18	14.16	0.99%	(E)-beta-Ocimene	Monoterpene
19	14.74	0.22%	gamma-Terpinene	Monoterpene
20	15.25	0.09%	cis-Linalool oxide (5) (furanoid)	Monoterpenol
21	15.85	0.11%	trans-Linalool oxide (5) (furanoid)	Monoterpenol
22	15.92	0.22%	Terpinolene	Monoterpene
23	16.24	37.32%	Linalool	Monoterpenol
24	16.36	0.01%	Hotrienol	Monoterpenol
25	16.45	0.37%	1-Octenyl-3 acetate	Monoterpene Ester
26	16.96	0.41%	Octan-3-yl acetate	Aliphatic Ester
27	17.35	0.26%	Alloocimene	Monoterpene
28	18.30	0.02%	Isopulegol	Monoterpenol
29	18.63	0.28%	Menthone	Monoterpene Ketone
30	19.08	0.25%	Isomenthone	Monoterpene Ketone
31	19.36	2.54%	Menthol	Monoterpenol

Client



Source

**Bergamot, Mint** (*Mentha citrata*)

EVS-2026-NG-10

Number	RT	Area %	Compound Name	Chemical Family
32	19.61	1.42%	Isopinocampnone	Monoterpene Ketone
33	19.75	0.05%	(Z)-3-Hexenyl butyrate	Aliphatic Ester
34	20.14	2.68%	alpha-Terpineol	Monoterpenol
35	20.38	0.19%	Methyl chavicol	Phenylpropanoid
36	20.51	0.11%	Myrtenal	Monoterpene Aldehyde
37	21.52	0.51%	Nerol	Monoterpenol
38	22.26	0.05%	Pulegone	Monoterpene Ketone
39	22.41	0.13%	Carvone	Monoterpene Ketone
40	22.69	35.05%	Linalyl acetate	Monoterpene Ester
41	23.32	0.03%	Geranial	Monoterpene Aldehyde
42	24.05	0.01%	19.64 Linalool oxide acetate<trans->(pyranoid)	Unknown
43	24.41	0.20%	Menthyl acetate	Monoterpene Ester
44	25.84	0.07%	Myrtenyl acetate	Monoterpene Ester
45	26.69	0.06%	22.30 Carvomenthyl acetate<neoiso->	Unknown
46	26.80	0.05%	21.36 Dihydro carveol acetate<iso->	Unknown
47	27.18	1.21%	Neryl acetate	Monoterpene Ester
48	27.98	2.23%	Geranyl acetate	Monoterpene Ester
49	28.25	0.08%	alpha-Copaene	Sesquiterpene
50	28.70	0.05%	beta-Bourbonene	Sesquiterpene
51	28.82	0.16%	beta-Elemene	Sesquiterpene
52	28.95	0.04%	cis-Jasmone	Jasmonate
53	30.11	0.04%	25.43 Ylangene<beta->	Unknown
54	30.20	3.54%	beta-Caryophyllene	Sesquiterpene
55	30.53	0.04%	beta-Copaene	Sesquiterpene
56	31.13	0.23%	(Z)-beta-Farnesene	Sesquiterpene
57	31.59	0.14%	alpha-Humulene	Sesquiterpene
58	31.91	0.07%	9-epi-(E)-Caryophyllene	Sesquiterpene
59	32.35	0.01%	gamma-Muurolene	Sesquiterpene
60	32.66	0.55%	Germacrene D	Sesquiterpene
61	33.27	0.04%	alpha-Muurolene	Sesquiterpene
62	34.17	0.04%	delta-Cadinene	Sesquiterpene
63	34.34	0.09%	29.60 Dihydroagarofuran<cis->	Unknown
64	35.17	0.33%	Elemol	Sesquiterpenol

Client



Source

**Bergamot, Mint** (*Mentha citrata*)

EVS-2026-NG-10

Number	RT	Area %	Compound Name	Chemical Family
65	35.42	0.02%	(Z)-Nerolidol	Sesquiterpenol
66	35.54	0.02%	Longipinanol	Sesquiterpenol
67	36.67	0.04%	trans-Sesquisabinene hydrate	Monoterpene Ester
68	36.78	0.18%	Caryophyllene oxide	Sesquiterpene Ether
69	37.11	0.51%	Viridiflorol	Sesquiterpenol
70	38.50	0.06%	gamma-Eudesmol	Sesquiterpenol
71	39.27	0.06%	beta-Eudesmol	Sesquiterpenol
72	39.36	0.06%	alpha-Eudesmol	Sesquiterpenol

